



StreamGroomer 3250e/3260e/3270e

Designed to leverage all the features of the Streamcore software suite to ensure user experience at remote sites at up to 10 Gbps

Delivering IT as a service on today's hybrid networks is a challenge, and IT service users need quality service, at all times, to achieve expected business results. Whether business-critical applications are hosted in traditional data centers or in the cloud, users need to get good performance no matter where they are on the available network. As business services become more complex, leveraging distributed applications in the cloud, and as users become increasingly mobile, networks must adapt to changing connectivity and performance requirements. Competitors are demanding this flexibility and efficiency from IT departments; any degradation in performance is unacceptable.

Streamcore's WAN performance management solutions facilitate the following tasks:

- Monitor any application, communication or public/private cloud service on the network
- Inspect, classify, measure, analyze and report on departmental performance
- Interrupt performance slowdowns in real time or off-line
- Control, shape and accelerate traffic to maximize the quality of the user experience

StreamGroomer (SG) network appliances monitor, control and accelerate application flows across the WAN. Deep packet inspection (DPI) and a library of well-known application protocols classify application flows for measurement, control and acceleration, both for reporting and active optimization of network performance. StreamGroomers uses several techniques to optimize the quality of service of interactive applications and multimedia services, shape application bandwidth and reduce the transit time of information transfers. All together, StreamGroomers ensures that users receive good performance regardless of where they are on the network and under all network traffic conditions.

StreamGroomers integrate seamlessly into any access architecture: simple, redundant, with 802.1Q trunking... They are positioned between the LAN and the WAN access router (in a breakaway or on a mirror port), and are managed through a dedicated Ethernet port.

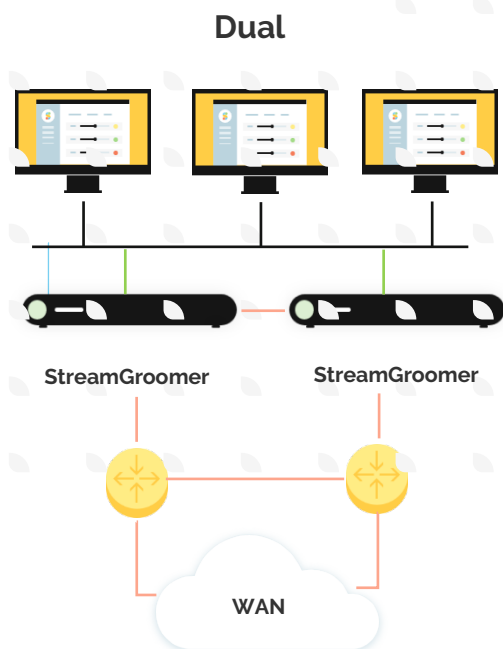
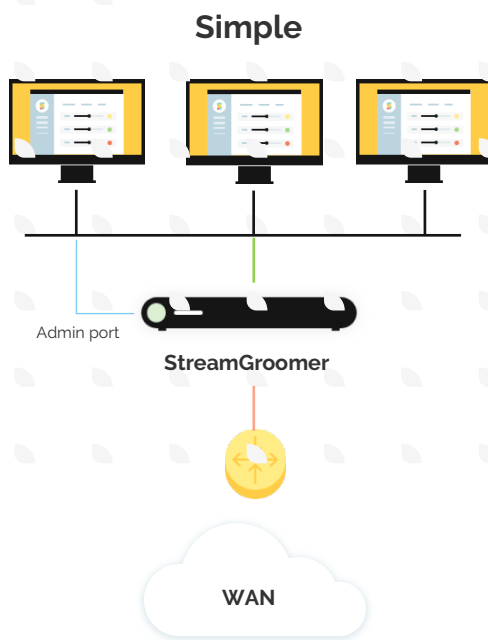
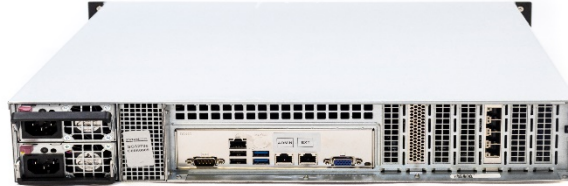
For high-availability architectures, two StreamGroomers can be deployed in dual or tandem, thus guaranteeing continuity of service in all circumstances. Finally, the deployment can be automated by simply configuring all the initial parameters via a USB key.

Benefits:

- Ensures the user experience
- Optimized network performance
- Application-oriented analysis
- Hybrid, multi-link networks
- High availability solutions
- Centralized management
- Automated configuration
- Secure management link
- Expandable for future demands

StreamGroomer Features

- Advanced traffic classification using Deep Packet Inspection (DPI)
- Monitoring and management of flows according to applications
- WAN flow acceleration
- Quality of Service (QoS) control per user session
- Seamless integration between LAN and WAN
- Support for complex hybrid network architectures
- 802.1Q VLAN trunk, redundant access with asymmetric traffic
- Cooperation with service classes
- Integrated bypass
- Out-of-band administration
- Initial configuration with a USB key or console port
- SNMP Agent (MIB II, MIB Bridge and MIB Streamcore)



Specifications

Performance

- Line speed up to 2 Gbps¹
- Monitoring bandwidth 10/20 Gbps².
- Number of peers 1000³
- Max. number of TCP sessions 2 000 000
- Maximum number of bidirectional rules >50,000

Interfaces

Ethernet 10/100/1000BaseT

- up to 12x copper or optical LAN/WAN with integrated bypass (6x links)
- 1x out-of-band administration
- 1x EXT for Dual Mode

USB

- 2x USB 2.0

Asynchronous series

- 1x console, RS232C, RJ45

Network extension

- 5 PCIe slots

Storage expansion

- 3x bay 3,5

Size and environment

- Height - 4.4 cm 1U
- Width - 43.1 cm 19-inch rack mount
- Depth - 45 cm 17.7
- Weight - 19.7 kg 43.3 lbs
- Temperature - 5~35°C; 41~95°F operating -40~60°C; -40~140°F non-operating
- Non-condensing Humidity - 8~90% operating 5~95% non-operating

Power supply

- 100-240 VAC, 50/60 Hz, 700 W

MBTF

- > 45,000 hours

Compliance

- CE Class B, EN 60950/IEC 60950, CB, FCC Class B, UL, CUL, TUV, RoHS, CCC

¹The maximum throughput depends on the configured services as well as the number of rules and filters defined on the StreamGroomer, the actual traffic and the number of sessions

²The maximum number of partners is constrained by cache size and power. Contact a technical consultant to evaluate the specifics of your configuration.

³The maximum number of peers is limited by cache size and throughput requirements. Contact your representative technical sales representative to determine the suitability with the detailed parameters of your environment.